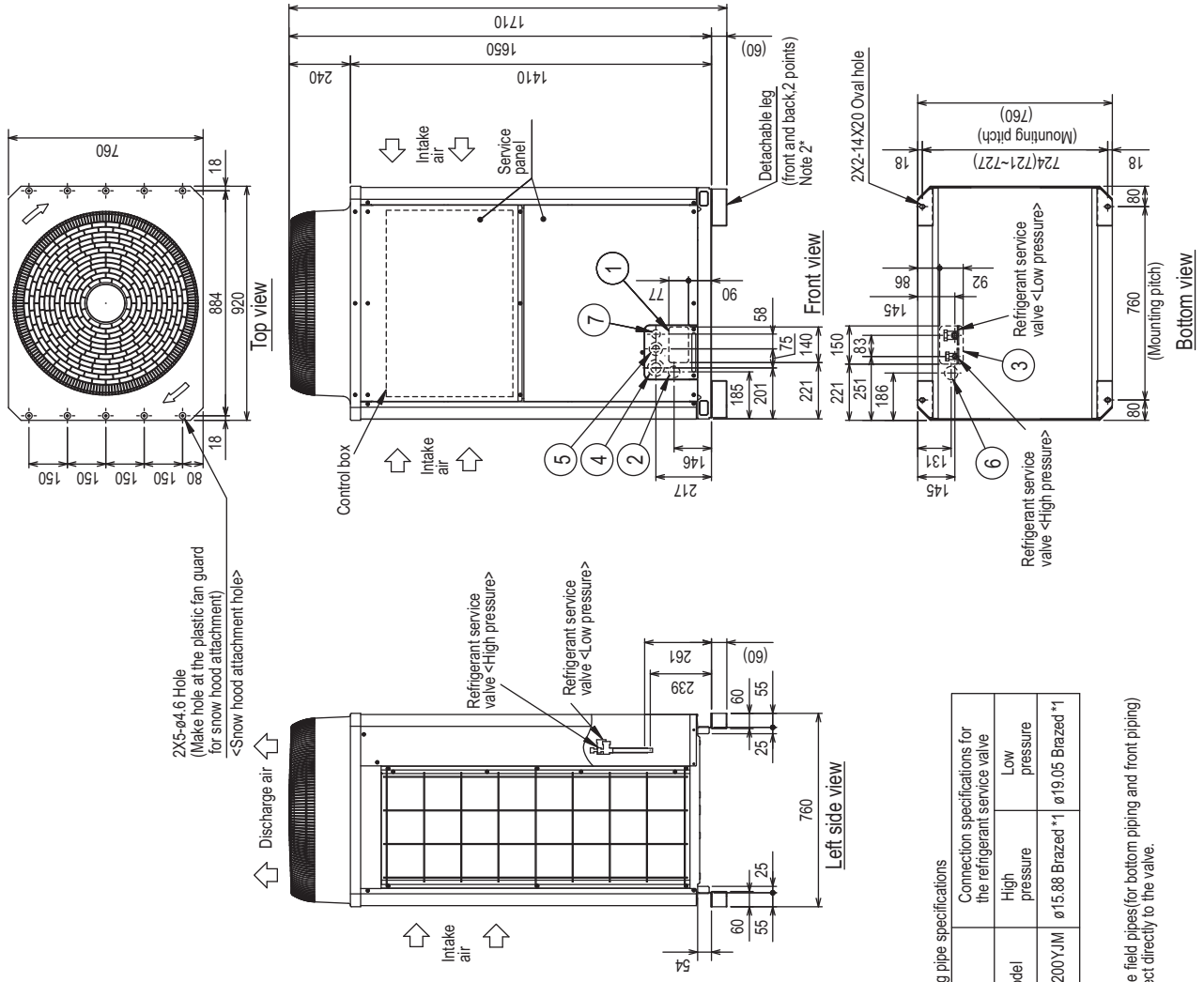


PURY-EP200YJM-A(-BS)

Unit : mm



Note 1. Please refer to the next page for information regarding necessary spacing around the unit and foundation work.  
 2. The detachable leg can be removed at site.  
 3. At brazing of pipes, wrap the refrigerant service valve with wet cloth and keep the temperature of refrigerant service valve under 120°C.

NO.	Usage	Specifications
①	Front through hole	140X77 Knockout hole
②	Front through hole (Uses when twinning kit (optional parts) is mounted.)	ø45 Knockout hole
③	Bottom through hole	150X92 Knockout hole
④	Front through hole	ø65 or ø40 Knockout hole
⑤	Front through hole	ø52 or ø27 Knockout hole
⑥	Bottom through hole	ø52 Knockout hole
⑦	For transmission cables	Front through hole ø34 Knockout hole

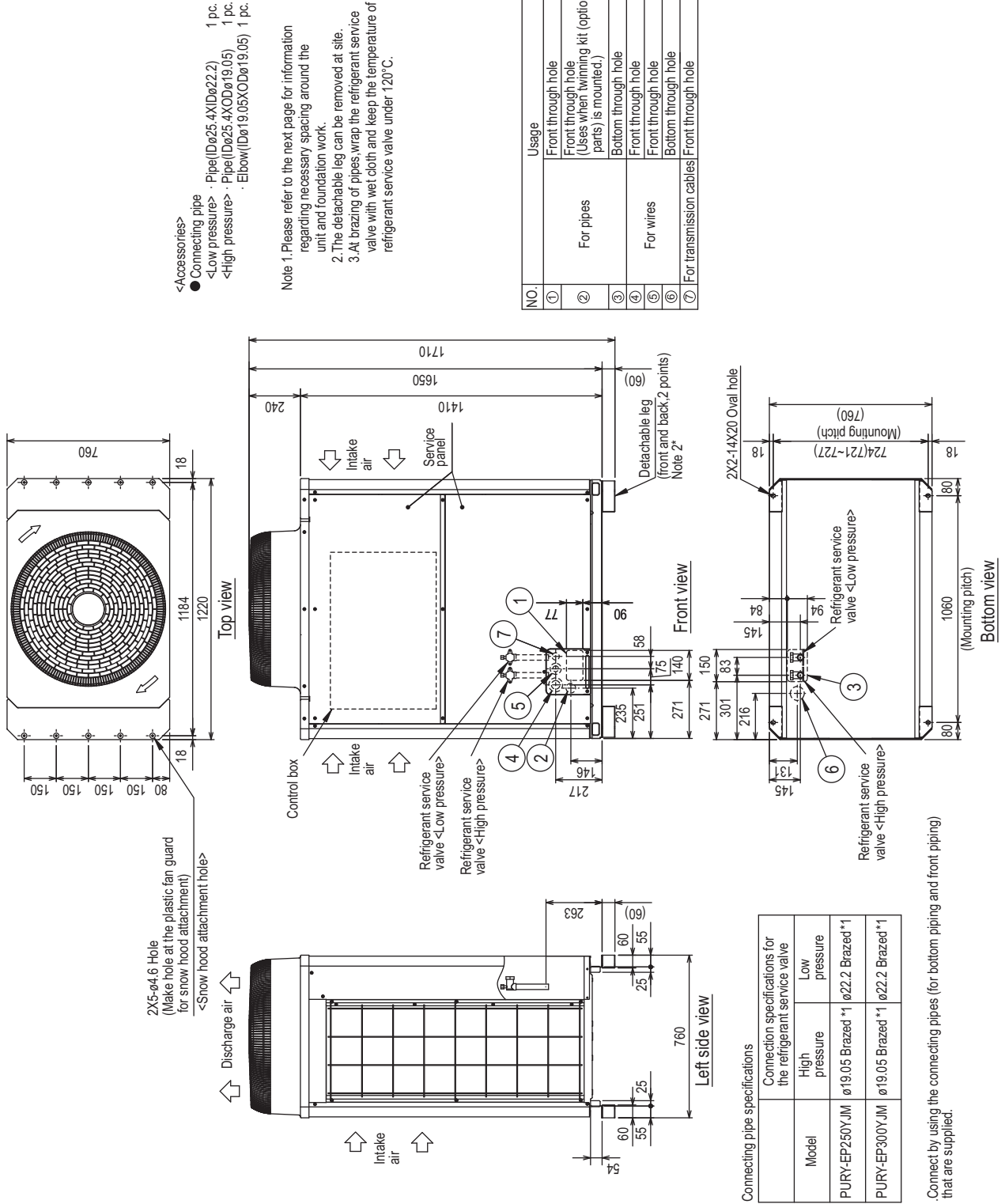
Connecting pipe specifications	
Model	Connection specifications for the refrigerant service valve
PURY-EP200YJM	High pressure ø15.88 Brazed *1
	Low pressure ø19.05 Brazed *1

\*1. Expand the field pipes (for bottom piping and front piping) and connect directly to the valve.

R2(HIGH COP)

## PURY-EP250,300YJM-A(-BS)

Unit : mm



- <Accessories>  
 ● Connecting pipe  
 <Low pressure> · Pipe( $\phi$ 25.4X(D $\phi$ 22.2) 1 pc.  
 <High pressure> · Pipe( $\phi$ 25.4X(D $\phi$ 19.05) 1 pc.  
 · Elbow(D $\phi$ 19.05X(D $\phi$ 19.05) 1 pc.

Note 1. Please refer to the next page for information regarding necessary spacing around the unit and foundation work.  
 2. The detachable leg can be removed at site.  
 3. At brazing of pipes, wrap the refrigerant service valve with wet cloth and keep the temperature of refrigerant service valve under 120°C.

NO.	Usage	Specifications
①	Front through hole	140X77 Knockout hole
②	For pipes	Front through hole (Uses when twinning kit (optional parts) is mounted.)
③	For pipes	Bottom through hole
④	For wires	Front through hole
⑤	For wires	Front through hole
⑥	For wires	Bottom through hole
⑦	For transmission cables	Front through hole

Connecting pipe specifications

Model	Connection specifications for the refrigerant service valve	
	High pressure	Low pressure
PURY-EP250YJM	$\phi$ 19.05 Brazed *1	$\phi$ 22.2 Brazed *1
PURY-EP300YJM	$\phi$ 19.05 Brazed *1	$\phi$ 22.2 Brazed *1

\*1. Connect by using the connecting pipes (for bottom piping and front piping) that are supplied.

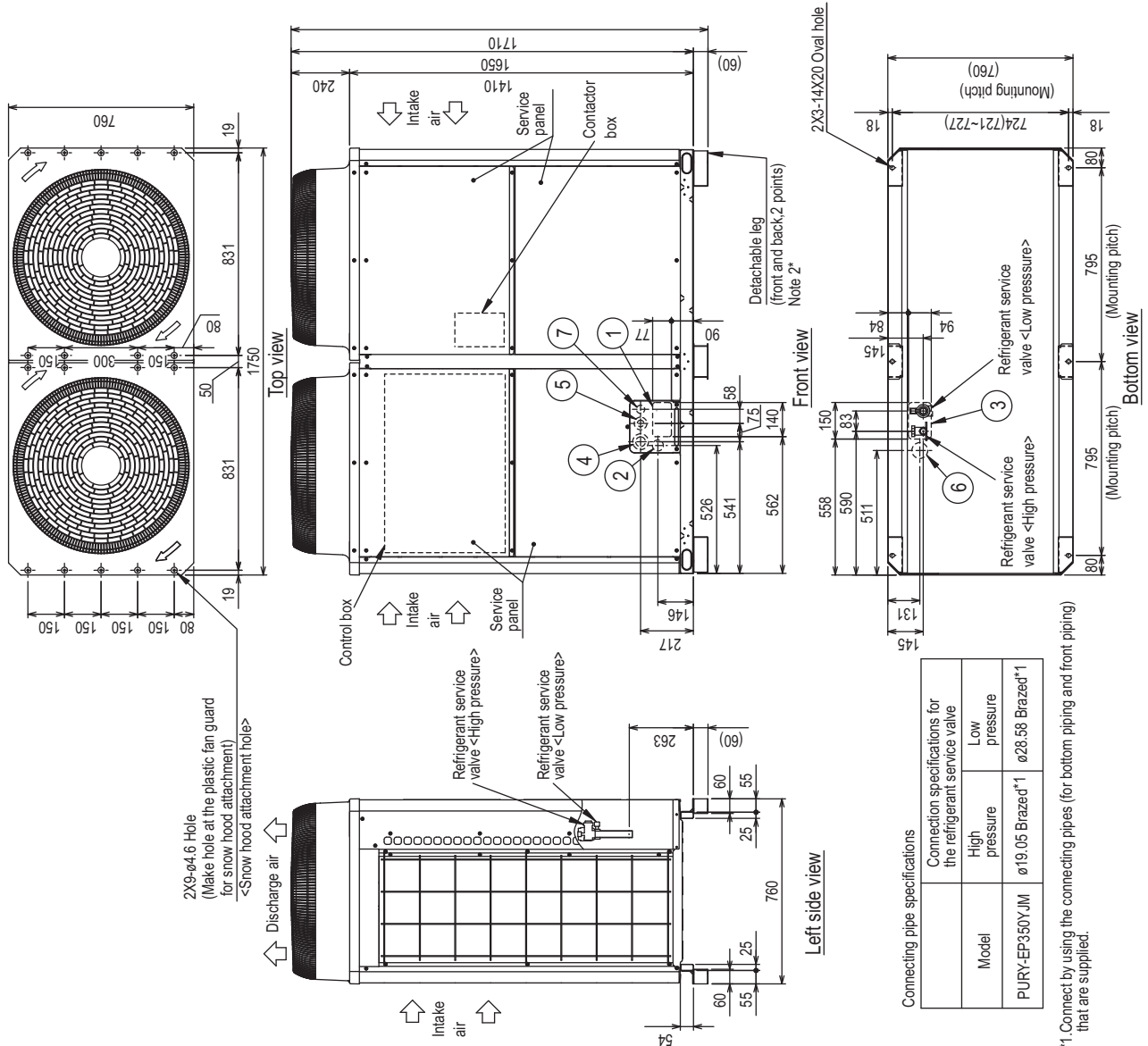
R2(HIGH COP)

## PURY-EP350YJM-A(-BS)

Unit : mm

- <Accessories>  
 ● Connecting pipe 1 pc.  
 <Low pressure> · Pipe (Dø28.58XODø28.58) 1 pc.  
 <High pressure> · Pipe (Dø25.4XODø19.05) 1 pc.  
 · Elbow (Dø19.05XODø19.05) 1 pc.
- Note 1. Please refer to the next page for information regarding necessary spacing around the unit and foundation work.  
 2. The detachable leg can be removed at site.  
 3. At brazing of pipes, wrap the refrigerant service valve with wet cloth and keep the temperature of refrigerant service valve under 120°C.

NO.	Usage	Specifications
①	Front through hole	140 X 77 Knockout hole
②	Front through hole (Uses when twinning kit (optional parts) is mounted.)	ø45 Knockout hole
③	Bottom through hole	150 X 94 Knockout hole
④	Front through hole	ø65 or ø40 Knockout hole
⑤	Front through hole	ø52 or ø27 Knockout hole
⑥	Bottom through hole	ø65 Knockout hole
⑦	For transmission cables	ø34 Knockout hole

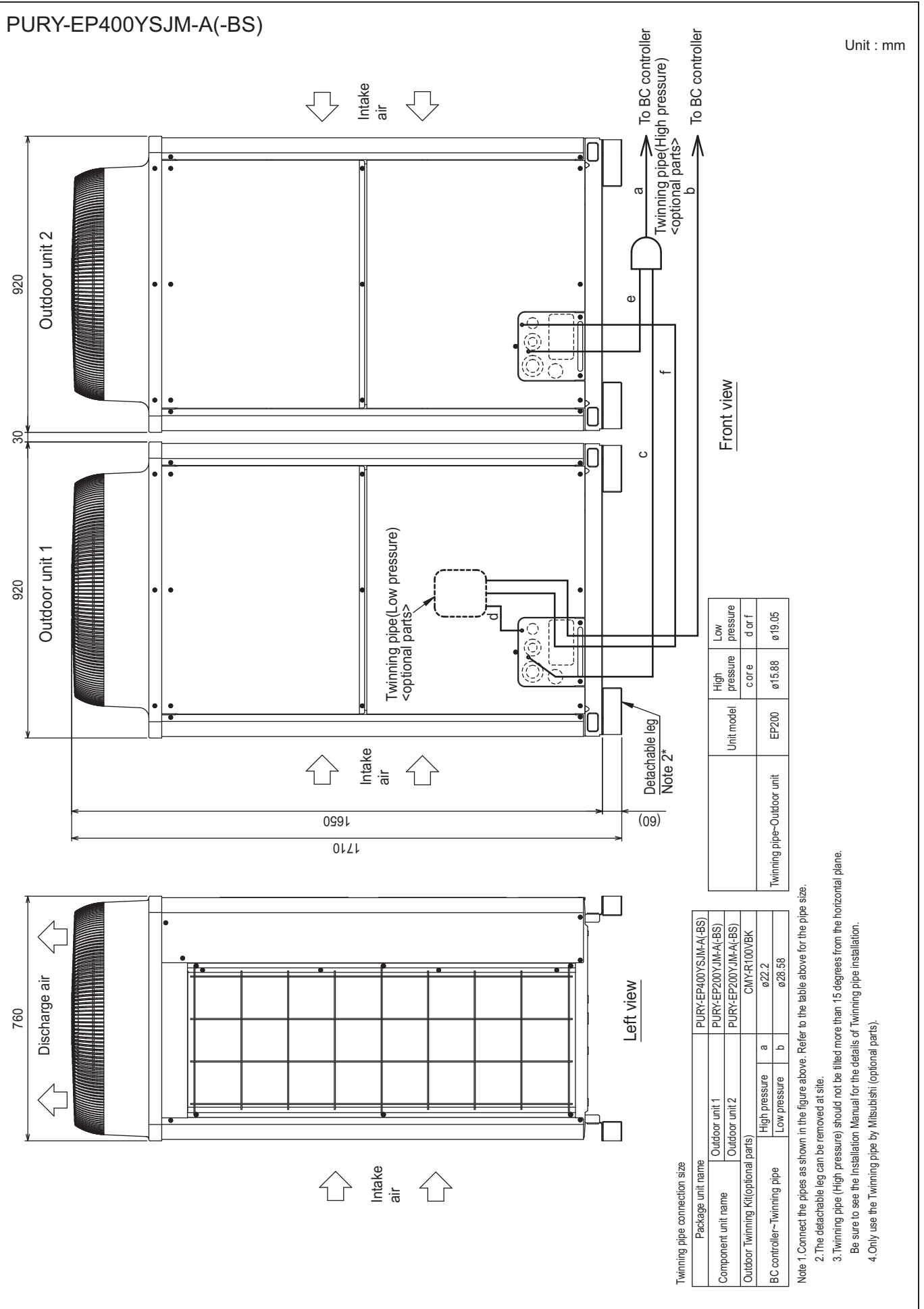


Connecting pipe specifications

Model	High pressure	Low pressure
PURY-EP350YJM	ø19.05 Brazed*1	ø28.58 Brazed*1

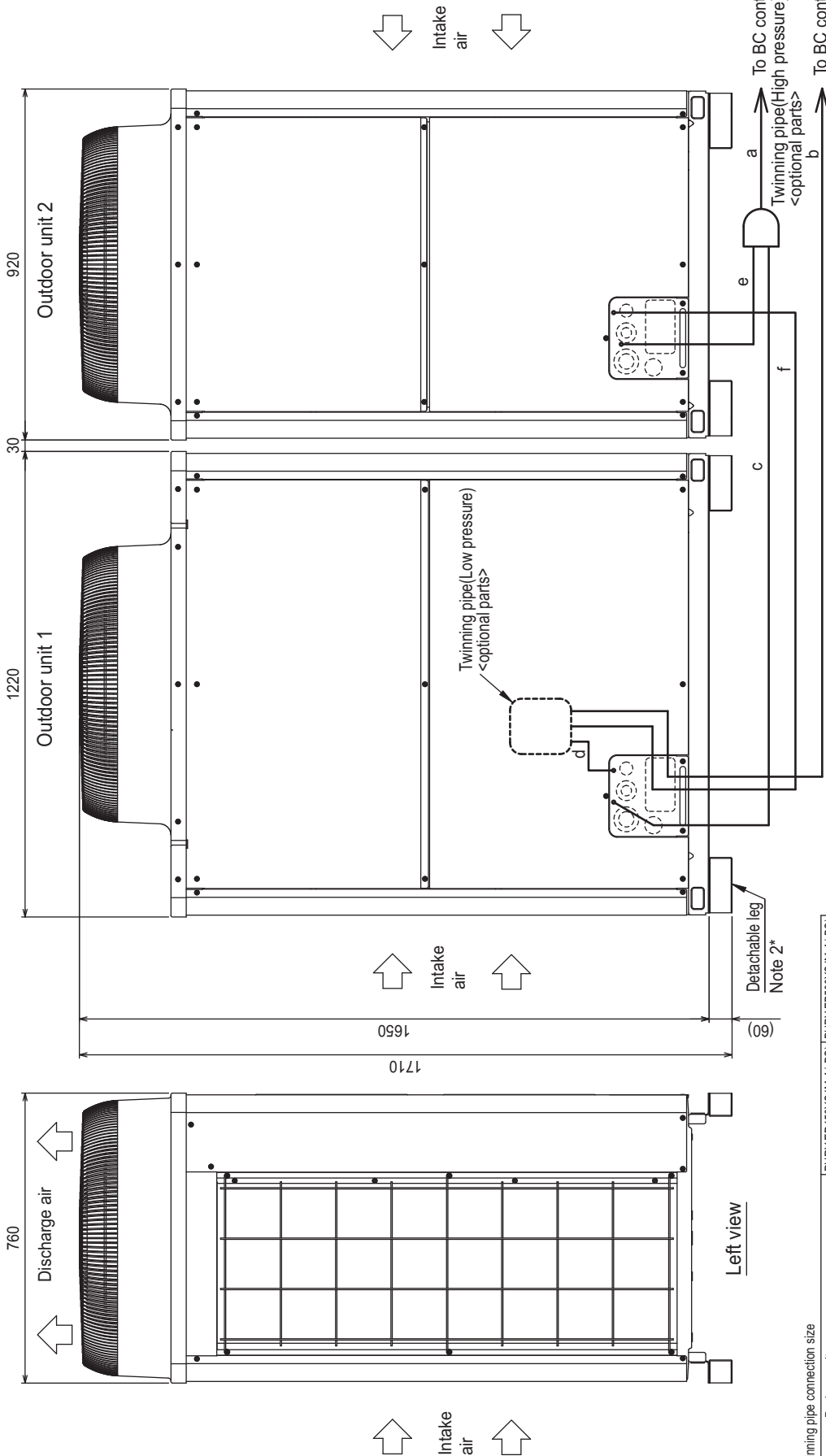
Connection specifications for the refrigerant service valve

\*1 Connect by using the connecting pipes (for bottom piping and front piping) that are supplied.



PURY-EP450,500YSJM-A(-BS)

Unit : mm



Front view

Unit model	High pressure core	Low pressure d or f
EP200	ø15.88	ø19.05
EP250	ø19.05	ø22.2
EP300	ø19.05	ø22.2

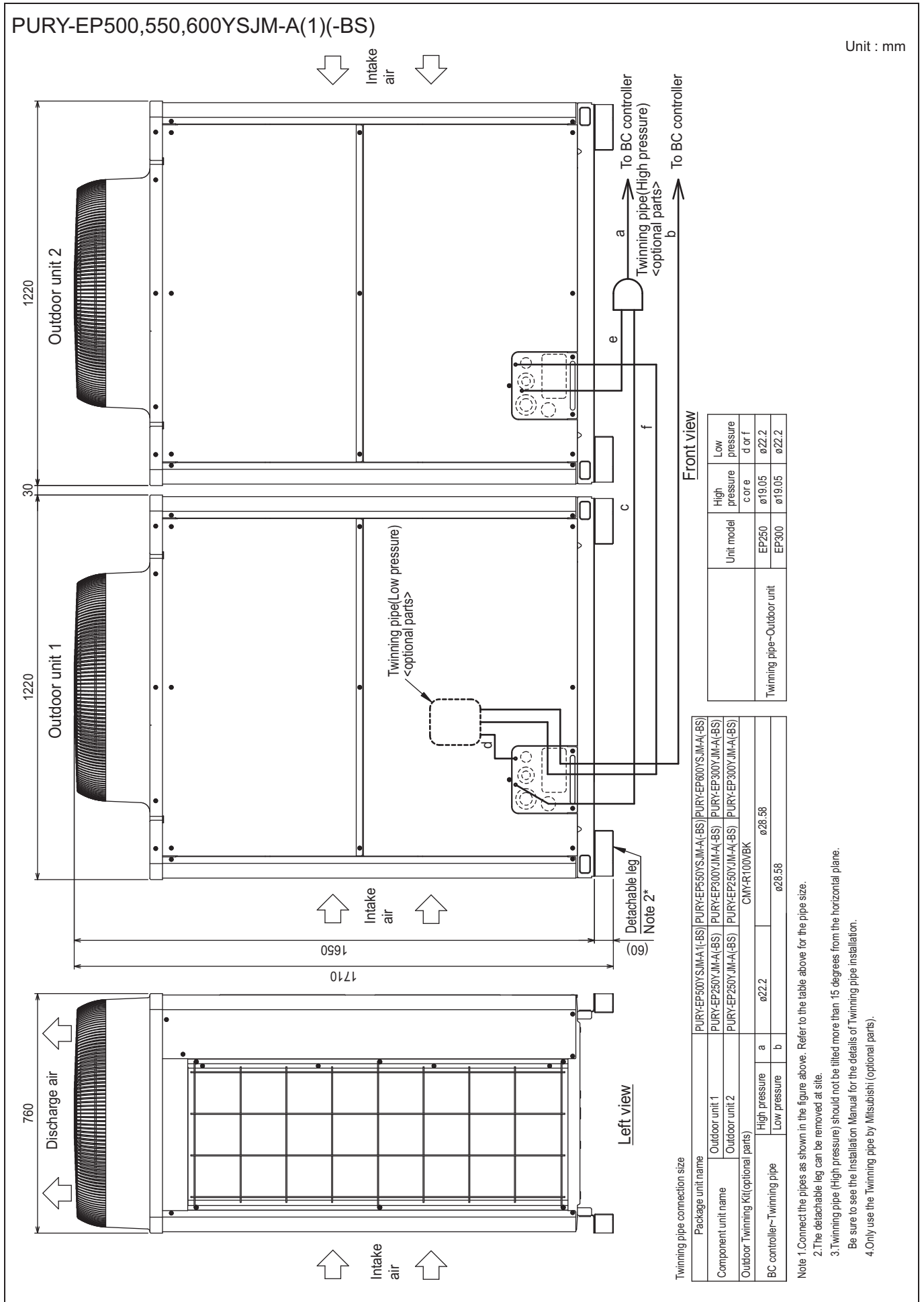
Twinning pipe~Outdoor unit

Twinning pipe connection size

Package unit name	PURY-EP450YSJM-A(-BS)	PURY-EP500YSJM-A(-BS)
Outdoor unit 1	PURY-EP250YSJM-A(-BS)	PURY-EP300YSJM-A(-BS)
Outdoor unit 2	PURY-EP200YSJM-A(-BS)	PURY-EP200YSJM-A(-BS)
Outdoor Twinning Kit (optional parts)	CWMY-R100VBK	
BC controller~Twinning pipe	High pressure	ø22.2
	Low pressure	ø28.58

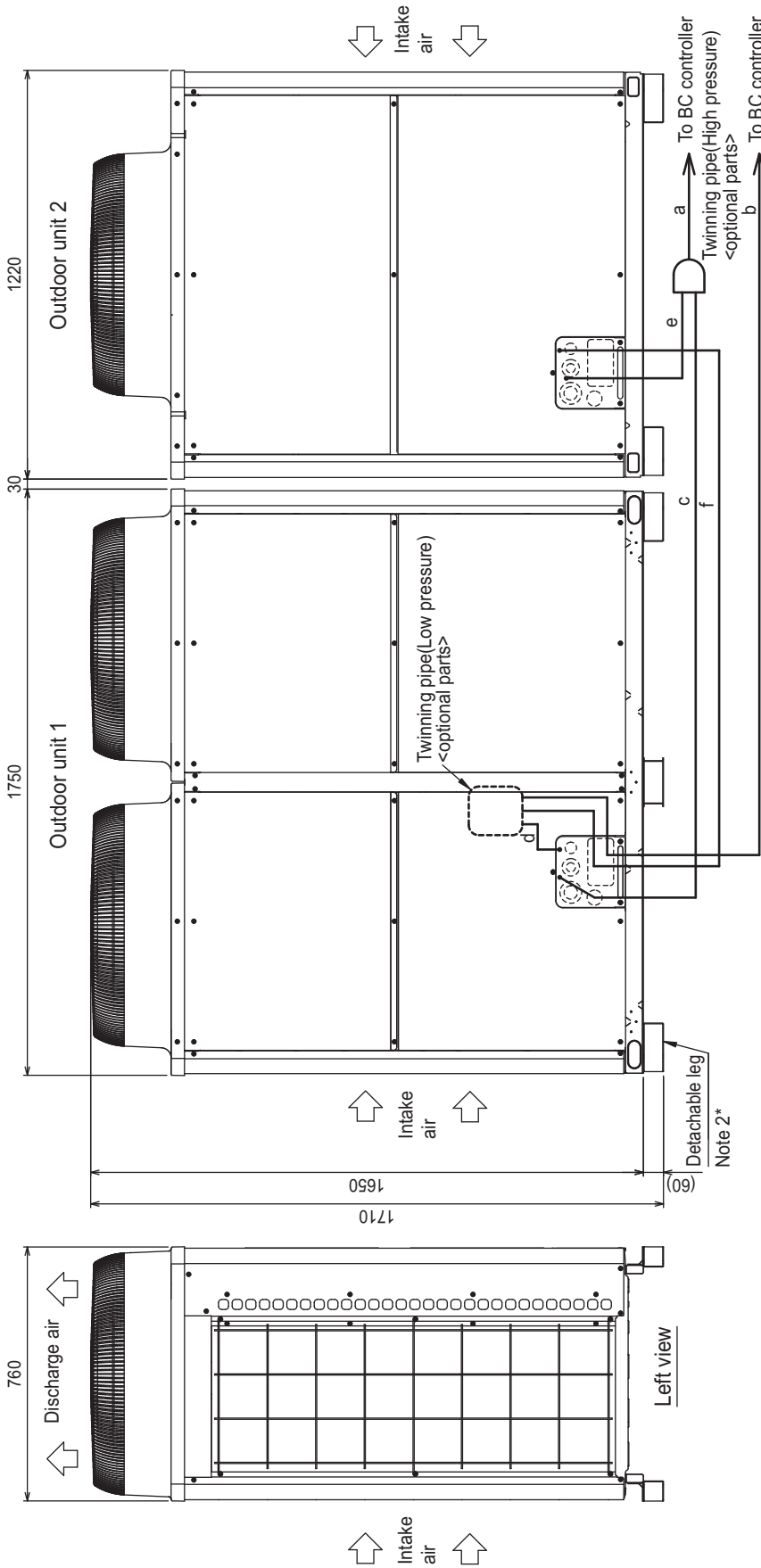
- Note 1. Connect the pipes as shown in the figure above. Refer to the table above for the pipe size.  
 2. The detachable leg can be removed at site.  
 3. Twinning pipe (High pressure) should not be tilted more than 15 degrees from the horizontal plane.  
 Be sure to see the Installation Manual for the details of Twinning pipe installation.  
 4. Only use the Twinning pipe by Mitsubishi (optional parts).

R2(HIGH COP)



PURY-EP600,650YSJM-A(1)-(BS)

Unit : mm



Front view

Left view

Twinning pipe connection size

Package unit name	PURY-EP600YSJM-A(1)-(BS)	PURY-EP650YSJM-A(1)-(BS)
Outdoor unit 1	PURY-EP350YJM-A(BS)	PURY-EP300YJM-A(BS)
Outdoor unit 2	PURY-EP250YJM-A(BS)	CMY-R100XLVBK
Outdoor Twinning Kit(optional parts)		
BC controller~Twinning pipe	High pressure	a
	Low pressure	b

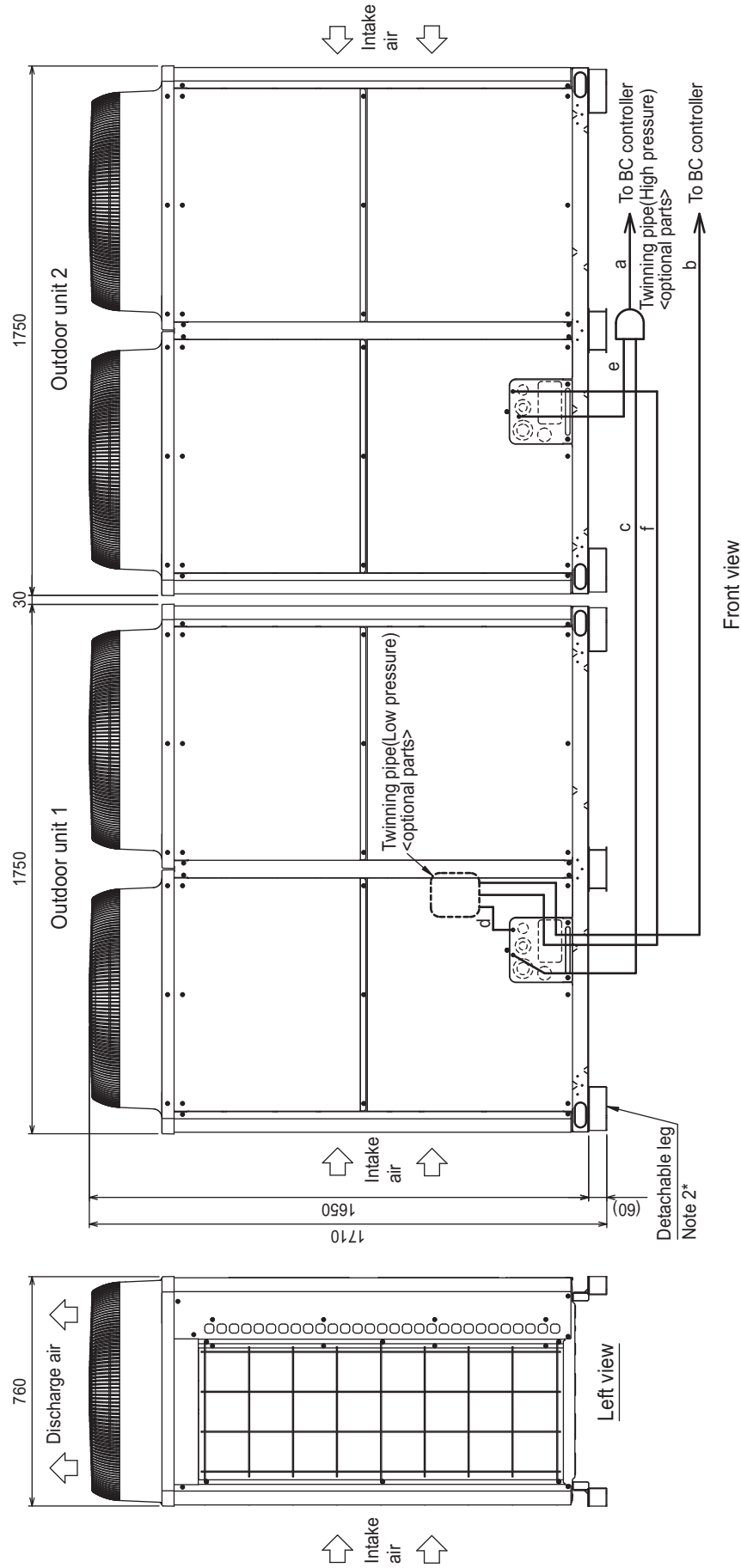
Twinning pipe~Outdoor unit	Unit model	High pressure	Low pressure
	EP250	c or e	d or f
EP300	ø19.05	ø22.2	
EP350	ø19.05	ø28.58	

- Note 1. Connect the pipes as shown in the figure above. Refer to the table above for the pipe size.
- 2. The detachable leg can be removed at site.
- 3. Twinning pipe (High pressure) should not be tilted more than 15 degrees from the horizontal plane. Be sure to see the Installation Manual for the details of Twinning pipe installation.
- 4. Only use the Twinning pipe by Mitsubishi (optional parts).

R2(HIGH COP)

## PURY-EP700YSJM-A(-BS)

Unit : mm



Front view

Left view

Twinning pipe connection size

Package unit name	PURY-EP700YSJM-A(-BS)	
Component unit name	Outdoor unit 1	Outdoor unit 2
Outdoor Twinning Kit(optional parts)	CMY-R100XLVBK	
BC controller-Twinning pipe	High pressure	a
	Low pressure	b
		ø34.93

Twinning pipe-Outdoor unit	High pressure	core	ø19.05
	Low pressure	d or f	ø28.58

Note 1: Connect the pipes as shown in the figure above. Refer to the table above for the pipe size.

Note 2: The detachable leg can be removed at site.

Note 3: Twinning pipe (High pressure) should not be tilted more than 15 degrees from the horizontal plane.

Note 4: Only use the Twinning pipe by Mitsubishi (optional parts).