

CMB-P108,1010,1013,1016V-GA

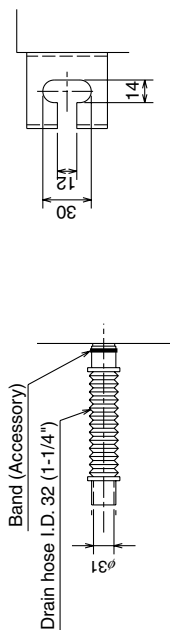
Draw. : cmb-p108-1016v-gA-W656-838A

Unit : mm

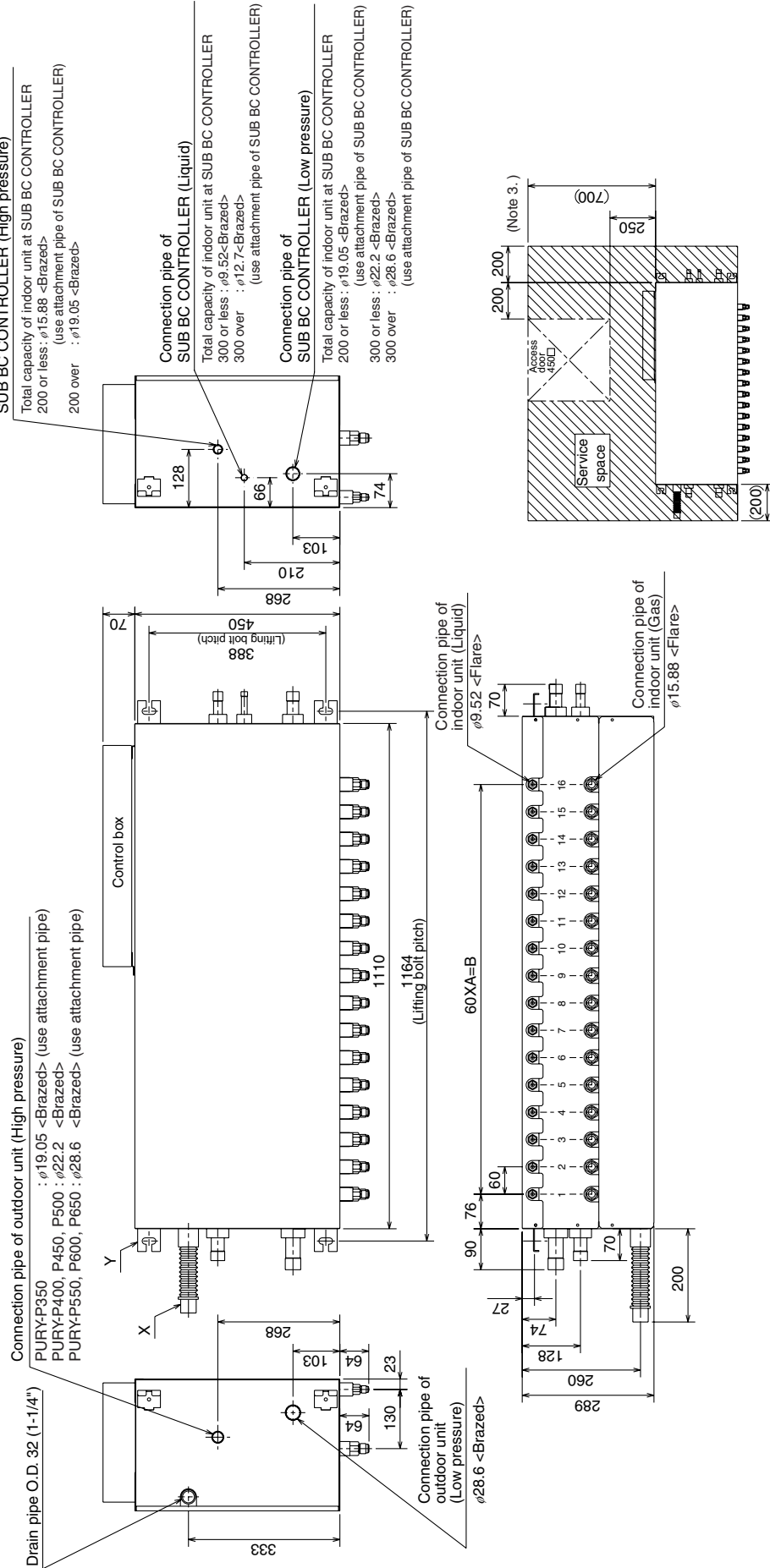
- <Accessories>
- Refrigerant-High pressure-conn. pipe 2pcs.
 - Reducer(Large,Small) Quantity for all connections
 - Drain hose I.D. 32 (1-1/4") 1pc.
 - Hose band 1pc.
 - Tie band 1pc.

	A	B
CMB-P108V-GA	7	420
CMB-P1010V-GA	9	540
CMB-P1013V-GA	12	720
CMB-P1016V-GA	15	900

- Note 1. Suspension bolt(φ10), washer(M10), and nut(M10) prepare in the field.
 2. Take notice of service space as follows.
 (Please give attention not to occupy service space by letting ducts and pipes through.)
 3. Please take space to connect SUB BC CONTROLLER.



Detail of Y section



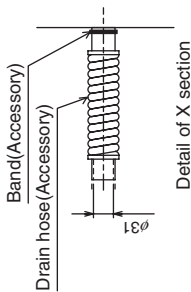
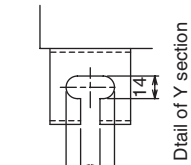
CMB-P1016V-HA

Drw. : cmb-p1016v-hA-WKB94-G932
Unit : mm

- <Accessories>
- Refrigerant<Low pressure> conn. pipe.....1pc.
 - Reducer<Large,Small>.....Quantity for all connections
 - Drain hose(VP-25 connection).....1pc.
 - Hose band.....1pc.
 - Tie band.....1pc.

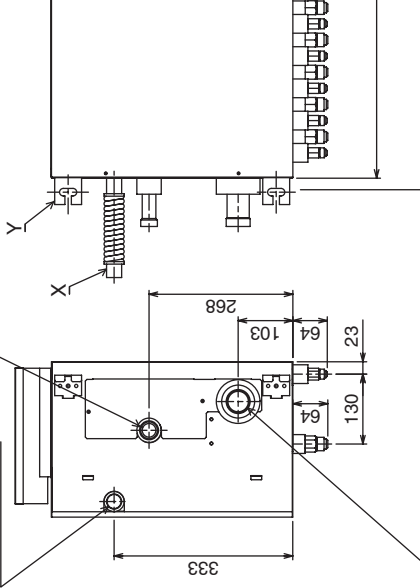
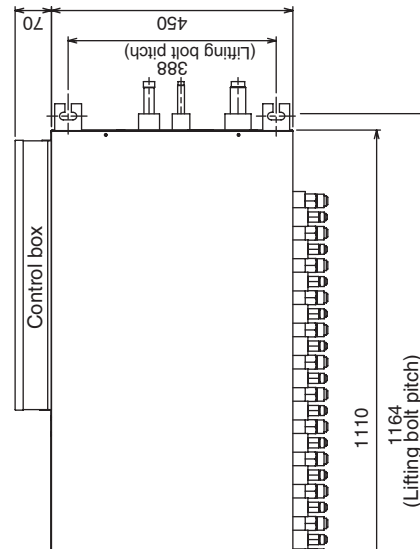
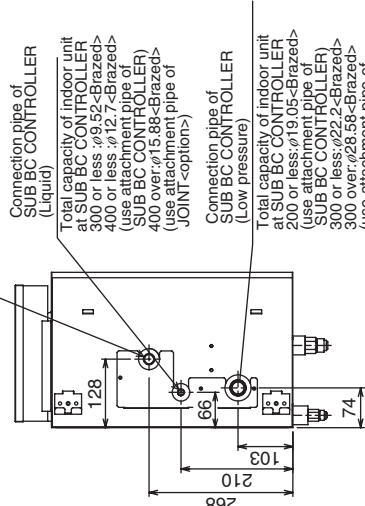
Note1, Suspension bolt(ϕ 10), washer(M10), and nut(M10) prepare in the field.

- Take notice of service space as follows.
(Please give attention not to occupy service space by letting ducts and pipes through.)
- Please take space to connect SUB BC CONTROLLER.
- When using an outdoor unit-28HP(P700) or more, use this product.
- Install this product in a location where noise (refrigerant noise) emitted by the unit will not disturb the neighbors.
(For use in quiet environments with low background noise, position the BC CONTROLLER at least 5m away from any indoor units.)

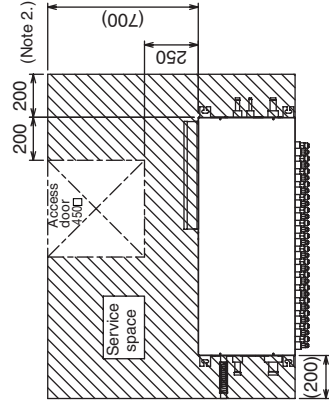
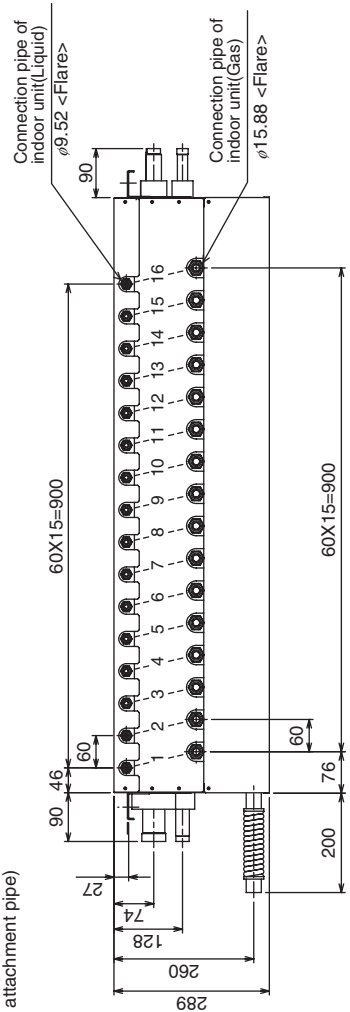


Connection pipe of outdoor unit (High pressure)
 ϕ 28.58 <Brazed>

Drain piping VP-25 connection



Connection pipe of outdoor unit (Low pressure)
 ϕ 34.93 <Brazed> (use attachment pipe)



Connection pipe of SUB BC CONTROLLER (Liquid)
Total capacity of indoor unit at SUB BC CONTROLLER
300 or less: ϕ 9.52 <Brazed>
400 or less: ϕ 12.7 <Brazed>
(use attachment pipe of SUB BC CONTROLLER)
400 over: ϕ 15.88 <Brazed>
(use attachment pipe of JOINT <option>)

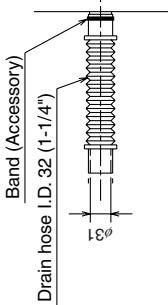
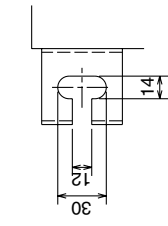
Connection pipe of SUB BC CONTROLLER (Low pressure)
Total capacity of indoor unit at SUB BC CONTROLLER
300 or less: ϕ 19.05 <Brazed>
(use attachment pipe of SUB BC CONTROLLER)
300 or less: ϕ 22.2 <Brazed>
300 over: ϕ 28.58 <Brazed>
(use attachment pipe of SUB BC CONTROLLER)

CMB-P104,108V-GB

Drw. : cmb-p104-108v-gB-W656-839A

Unit : mm

- <Accessories>
- Refrigerant<Low pressure>conn. pipe 4pcs.
 - Refrigerant<High pressure>conn. pipe 2pcs.
 - Refrigerant<Liquid>conn. pipe 2pcs.
 - Reducer(Large,Small) Quantity for all connections
 - Drain hose I.D. 32 (1-1/4") 1pc.
 - Hose band 1pc.
 - Tie band 1pcs.
- Note1. Suspension bolt(φ10), washer(M10), and nut(M10) prepare in the field.
 2. Take notice of service space as follows.
 (Please give attention not to occupy service space by letting ducts and pipes through.)
 3. Can't use singleness, (MAIN BC CONTROLLER is necessary.)



Detail of Y section

Detail of X section

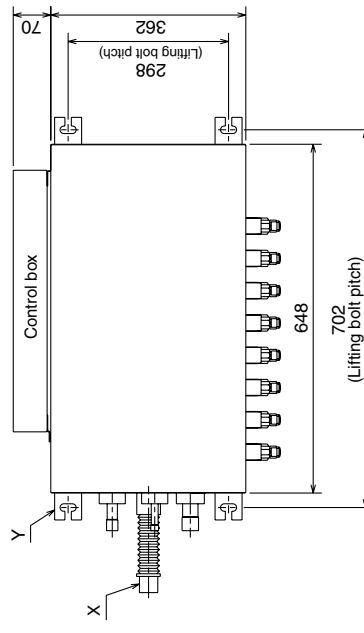
Connection pipe of MAIN BC CONTROLLER (Liquid)

Total capacity of indoor units at SUB BC CONTROLLER
 300 or less : φ9.52 <Brazed>
 300 over : φ12.7 <Brazed> (use attachment pipe)

Connection pipe of MAIN BC CONTROLLER (High pressure)

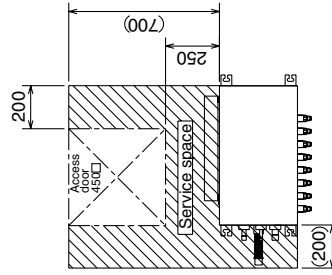
Total capacity of indoor units at SUB BC CONTROLLER
 200 or less : φ15.88 <Brazed> (use attachment pipe)
 200 over : φ19.05 <Brazed>

Drain pipe O.D. 32 (1-1/4")



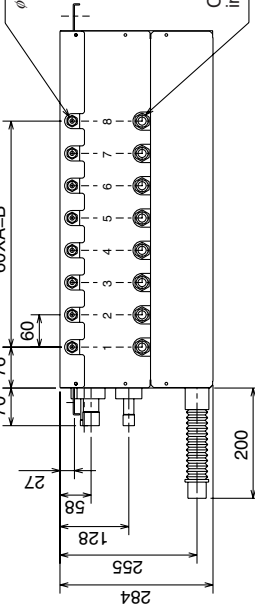
Connection pipe of MAIN BC CONTROLLER (Low pressure)

Total capacity of indoor units at SUB BC CONTROLLER
 200 or less : φ19.05 <Brazed> (use attachment pipe)
 300 or less : φ22.2 <Brazed>
 300 over : φ28.6 <Brazed> (use attachment pipe)



Connection pipe of indoor unit (Liquid) φ9.52 <Flare>

Connection pipe of indoor unit (Gas) φ15.88 <Flare>



	A	B
CMB-P104V-GB	3	180
CMB-P108V-GB	7	420

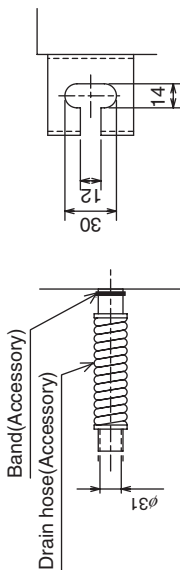
CMB-P1016V-HB

Unit : mm
 Draw. : cmb-p1016v-hB-WKB94-G933

- <Accessories>
- Refrigerant<Low pressure> conn. pipe.....4pcs.
 - Refrigerant<High pressure> conn. pipe.....2pcs.
 - Refrigerant<Liquid> conn. pipe.....2pcs.
 - Reducer<Large,Small>.....Quantity for all connections
 - Drain hose(VP-25 connection).....1pc.
 - Hose band.....1pc.
 - Tie band.....1pc.

Note 1. Suspension bolt(φ10), washer(M10), and nut(M10) prepare in the field.

2. Take notice of service space as follows.
 (Please give attention not to occupy service space by letting ducts and pipes through.)
3. Can't use singleness. (MAIN BC CONTROLLER is necessary.)
4. Install this product in a location where noise (refrigerant noise) emitted by the unit will not disturb the neighbors.
 (For use in quiet environments with low background noise, position the BC CONTROLLER at least 5m away from any indoor units.)



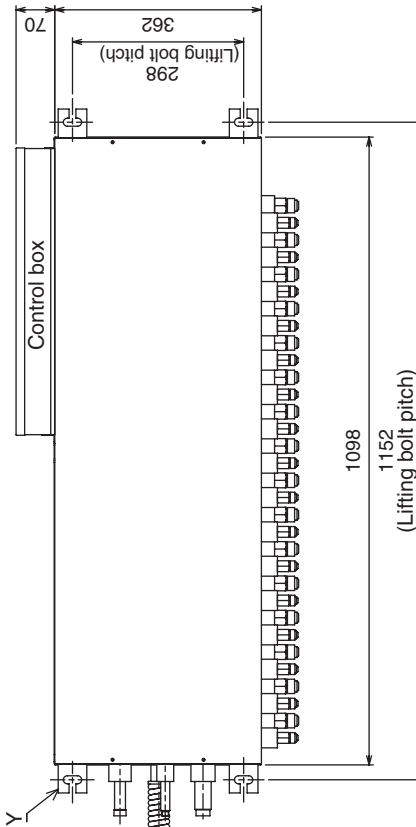
Connection pipe of MAIN BC CONTROLLER (High pressure)

Total capacity of indoor units at SUB BC CONTROLLER
 200 or less: φ15.88<Brazed> (use attachment pipe)
 200 over : φ19.05<Brazed>

Detail of Y section

Connection pipe of MAIN BC CONTROLLER(Liquid)

Total capacity of indoor units at SUB BC CONTROLLER
 300 or less: φ9.52 <Brazed>
 300 over : φ12.7 <Brazed> (use attachment pipe)



Connection pipe of MAIN BC CONTROLLER (Low pressure)

Total capacity of indoor units at SUB BC CONTROLLER
 200 or less: φ19.05<Brazed> (use attachment pipe)
 300 or less: φ22.2 <Brazed>
 300 over : φ28.58<Brazed> (use attachment pipe)

